

EM-2RSC/21AU-R/L-P - Extension module



2908701

<https://www.phoenixcontact.com/us/products/2908701>

Please be informed that the data shown in this PDF document is generated from our online catalog. Please find the complete data in the user documentation. Our general terms of use for downloads are valid.



Relay extension module for ELR-...-P hybrid motor starters, feedback of forward and reverse running when control signal is present, screw connection, DIN rail connector included

Commercial data

| | |
|--------------------------------------|--------------------|
| Item number | 2908701 |
| Packing unit | 1 pc |
| Minimum order quantity | 1 pc |
| Sales key | C472 |
| Product key | CK7485 |
| Catalog page | Page 26 (C-5-2019) |
| GTIN | 4055626323183 |
| Weight per piece (including packing) | 182.6 g |
| Weight per piece (excluding packing) | 182.6 g |
| Customs tariff number | 85364190 |
| Country of origin | DE |

EM-2RSC/21AU-R/L-P - Extension module



2908701

<https://www.phoenixcontact.com/us/products/2908701>

Technical data

Product properties

| | |
|----------------|------------------|
| Product type | Extension module |
| Product family | CONTACTRON |

Electrical properties

Insulation characteristics

| | |
|--------------------------|-------|
| Rated insulation voltage | 250 V |
| Rated surge voltage | 4 kV |
| Degree of pollution | 2 |

Output data

| | |
|---|----------------------|
| Contact switching type | 1 changeover contact |
| Rated operating voltage U_e | 24 V DC |
| | 230 V AC |
| Switching capacity in accordance with IEC 60947-5-1 | 3 A (230 V, AC15) |
| | 2 A (24 V, DC13) |

Connection data

Load circuit

| | |
|----------------------------------|---|
| Connection method | Screw connection |
| Stripping length | 8 mm |
| Screw thread | M3 |
| Conductor cross section rigid | 0.2 mm ² ... 2.5 mm ² |
| Conductor cross section flexible | 0.2 mm ² ... 2.5 mm ² |
| Conductor cross section AWG | 24 ... 14 |
| Tightening torque | 0.5 Nm ... 0.6 Nm |
| | 5 lb _f -in. ... 7 lb _f -in. |

INTERFACE system

| | |
|-----------------------|-------------------------|
| Connection method | DIN rail bus connectors |
| Number of connections | 1 |
| Number of positions | 5 |

Dimensions

| | |
|--------|----------|
| Width | 22.5 mm |
| Height | 106.6 mm |
| Depth | 113.7 mm |

Environmental and real-life conditions

Ambient conditions

| | |
|----------------------|------|
| Degree of protection | IP20 |
|----------------------|------|

EM-2RSC/21AU-R/L-P - Extension module



2908701

<https://www.phoenixcontact.com/us/products/2908701>

| | |
|---|------------------|
| Ambient temperature (operation) | -25 °C ... 70 °C |
| Ambient temperature (storage/transport) | -40 °C ... 80 °C |

Approvals

UKCA

| | |
|-------------|----------------|
| Certificate | UKCA-compliant |
|-------------|----------------|

UL approval

| | |
|-------------|--------------|
| Certificate | NLDX.E228652 |
| | NRNT.E172140 |

UL data

| | |
|---------------------------------|------------------|
| Category code | NLDX / NRNT |
| Ambient temperature (operation) | -25 °C ... 55 °C |

Standards and regulations

| | |
|-----------------------|---------------|
| Standards/regulations | IEC 60947-5-1 |
|-----------------------|---------------|

Mounting

| | |
|-----------------------|--------------------------------|
| Mounting type | DIN rail mounting |
| Assembly instructions | in rows with zero spacing |
| Mounting position | Vertical (horizontal DIN rail) |

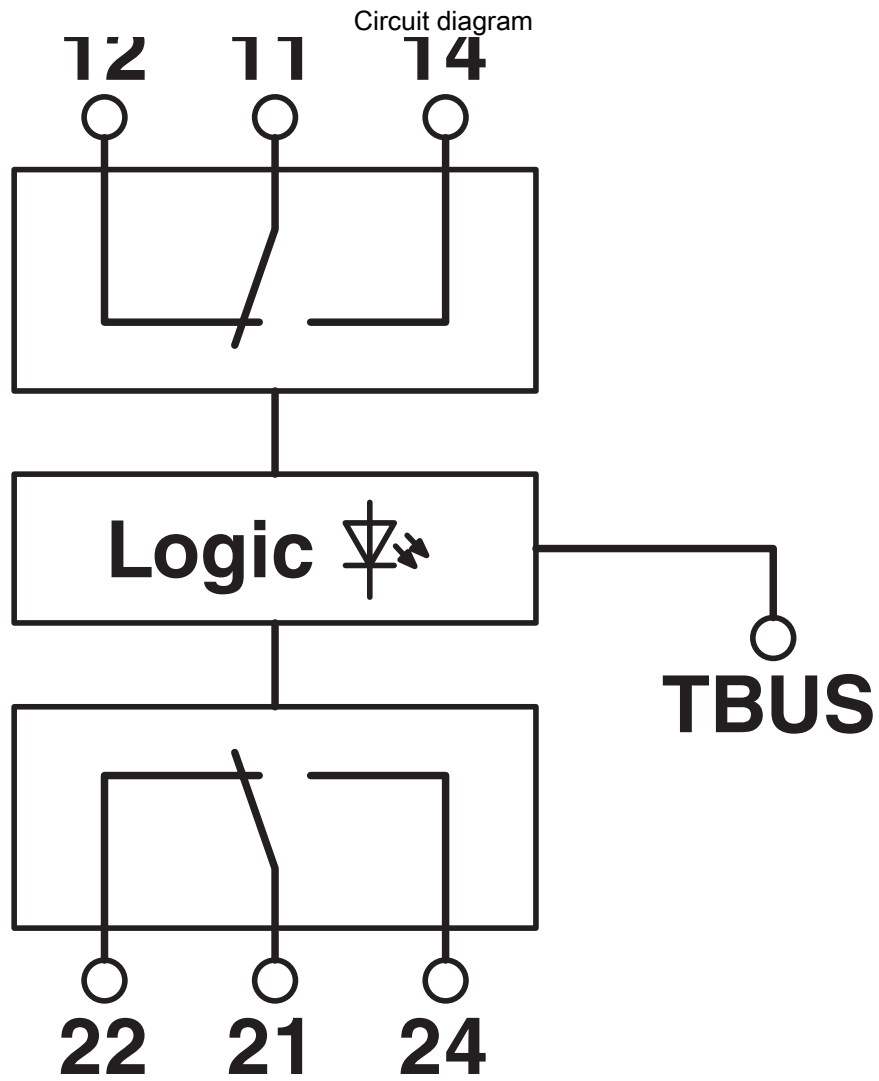
EM-2RSC/21AU-R/L-P - Extension module



2908701

<https://www.phoenixcontact.com/us/products/2908701>

Drawings



EM-2RSC/21AU-R/L-P - Extension module



2908701

<https://www.phoenixcontact.com/us/products/2908701>

Approvals

To download certificates, visit the product detail page: <https://www.phoenixcontact.com/us/products/2908701>



EAC

Approval ID: RU*DE*08.B.01841/19



UL Listed

Approval ID: FILE E 172140



cUL Listed

Approval ID: FILE E 172140



cUL Listed

Approval ID: FILE E 228652



UL Listed

Approval ID: FILE E 228652

EM-2RSC/21AU-R/L-P - Extension module



2908701

<https://www.phoenixcontact.com/us/products/2908701>

Classifications

ECLASS

| | |
|-------------|----------|
| ECLASS-11.0 | 27371601 |
| ECLASS-12.0 | 27371601 |
| ECLASS-13.0 | 27371601 |

ETIM

| | |
|----------|----------|
| ETIM 9.0 | EC001437 |
|----------|----------|

UNSPSC

| | |
|-------------|----------|
| UNSPSC 21.0 | 39122300 |
|-------------|----------|

EM-2RSC/21AU-R/L-P - Extension module



2908701

<https://www.phoenixcontact.com/us/products/2908701>

Environmental product compliance

| | |
|------------|--|
| REACH SVHC | Lead 7439-92-1 |
| China RoHS | Environmentally Friendly Use Period = 50 years |
| | For information on hazardous substances, refer to the manufacturer's declaration available under "Downloads" |

EM-2RSC/21AU-R/L-P - Extension module



2908701

<https://www.phoenixcontact.com/us/products/2908701>

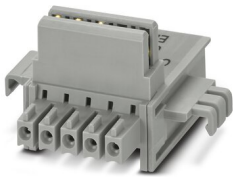
Mandatory accessories

ELR-TBUS-22,5-P - DIN rail bus connectors

2203861

<https://www.phoenixcontact.com/us/products/2203861>

Special DIN rail connector only suitable for ELR H...-P and EM-...-P.



ELR H5-I-PT- 24DC/500AC-9-P02 - Hybrid motor starter

1160740

<https://www.phoenixcontact.com/us/products/1160740>

Modular hybrid motor starter for starting and reversing motors incl. motor protection and rotary field monitoring, input: 24 V DC, output: 3~, 500 V AC, 9 A, connection method: Push-in connection



EM-2RSC/21AU-R/L-P - Extension module

2908701

<https://www.phoenixcontact.com/us/products/2908701>



ELR H5-I-SC- 24DC/500AC-9-P - Hybrid motor starter

2908693

<https://www.phoenixcontact.com/us/products/2908693>



Hybrid motor starter as an alternative to a conventional reversing contactor. Reverses 3~ AC motors up to 9 A and offers motor protection. Possible supply and relay extension via DIN rail connector.

ELR H3-I-SC- 24DC/500AC-9-P - Hybrid motor starter

2908694

<https://www.phoenixcontact.com/us/products/2908694>



Hybrid motor starter as an alternative to a conventional contactor circuit. Starts 3~ AC motors up to 9 A and offers motor protection. Possible supply and relay extension via DIN rail connector.

EM-2RSC/21AU-R/L-P - Extension module



2908701

<https://www.phoenixcontact.com/us/products/2908701>

ELR H5-I-SC- 24DC/500AC-3-P - Hybrid motor starter

2908695

<https://www.phoenixcontact.com/us/products/2908695>



Hybrid motor starter as an alternative to a conventional reversing contactor. Reverses 3~ AC motors up to 3 A and offers motor protection. Possible supply and relay extension via DIN rail connector.

ELR H3-I-SC- 24DC/500AC-3-P - Hybrid motor starter

2908696

<https://www.phoenixcontact.com/us/products/2908696>



Hybrid motor starter as an alternative to a conventional contactor circuit. Starts 3~ AC motors up to 3 A and offers motor protection. Possible supply and relay extension via DIN rail connector.

EM-2RSC/21AU-R/L-P - Extension module



2908701

<https://www.phoenixcontact.com/us/products/2908701>

ELR H5-IS-SC- 24DC/500AC-9-P - Hybrid motor starter

2908697

<https://www.phoenixcontact.com/us/products/2908697>



Hybrid motor starter as an alternative to a conventional reversing contactor. Reverses 3~ AC motors up to 9 A, provides motor protection and emergency stop up to SIL 3 / PL e. Group shut-down, supply, and relay extension possible via DIN rail connector.

ELR H3-IS-SC- 24DC/500AC-9-P - Hybrid motor starter

2908698

<https://www.phoenixcontact.com/us/products/2908698>



Hybrid motor starter as an alternative to a conventional protective circuit. Starts 3~ AC motors up to 9 A, provides motor protection and emergency stop up to SIL 3/PL e. Group shut-down, supply, and relay extension possible via DIN rail connector.

EM-2RSC/21AU-R/L-P - Extension module

2908701

<https://www.phoenixcontact.com/us/products/2908701>

ELR H5-IS-SC- 24DC/500AC-3-P - Hybrid motor starter

2908699

<https://www.phoenixcontact.com/us/products/2908699>



Hybrid motor starter as an alternative to a conventional reversing contactor. Reverses 3~ AC motors up to 3 A, provides motor protection and emergency stop up to SIL 3/PL e. Group shut-down, supply, and relay extension possible via DIN rail connector.

ELR H3-IS-SC- 24DC/500AC-3-P - Hybrid motor starter

2908700

<https://www.phoenixcontact.com/us/products/2908700>



Hybrid motor starter as an alternative to a conventional protective circuit. Starts 3~ AC motors up to 3 A, provides motor protection and emergency stop up to SIL 3/PL e. Group shut-down, supply, and relay extension possible via DIN rail connector.

EM-2RSC/21AU-R/L-P - Extension module

2908701

<https://www.phoenixcontact.com/us/products/2908701>



ELR H5-IES-PT- 24DC/500AC-9-P - Hybrid motor starter

2909554

<https://www.phoenixcontact.com/us/products/2909554>



Hybrid motor starter as an alternative to a conventional reversing contactor. Reverses 3~ AC motors up to 9 A, provides motor protection, ATEX, and emergency stop up to SIL 3. Group shut-down, supply, and relay extension possible via DIN rail connector.

ELR H3-IES-PT- 24DC/500AC-9-P - Hybrid motor starter

2909555

<https://www.phoenixcontact.com/us/products/2909555>



Hybrid motor starter as an alternative to a conventional protective circuit. Starts 3~ AC motors up to 9 A, provides motor protection, ATEX, and emergency stop up to SIL 3. Group shut-down, supply, and relay extension possible via DIN rail connector.

EM-2RSC/21AU-R/L-P - Extension module

2908701

<https://www.phoenixcontact.com/us/products/2908701>



ELR H5-IES-PT- 24DC/500AC-3-P - Hybrid motor starter

2909556

<https://www.phoenixcontact.com/us/products/2909556>



Hybrid motor starter as an alternative to a conventional reversing contactor. Reverses 3~ AC motors up to 3 A, provides motor protection, ATEX, and emergency stop up to SIL 3. Group shut-down, supply, and relay extension possible via DIN rail connector.

ELR H3-IES-PT- 24DC/500AC-3-P - Hybrid motor starter

2909557

<https://www.phoenixcontact.com/us/products/2909557>



Hybrid motor starter as an alternative to a conventional protective circuit. Starts 3~ AC motors up to 3 A, provides motor protection, ATEX, and emergency stop up to SIL 3. Group shut-down, supply, and relay extension possible via DIN rail connector.

EM-2RSC/21AU-R/L-P - Extension module

2908701

<https://www.phoenixcontact.com/us/products/2908701>



ELR H5-I-PT- 24DC/500AC-9-P - Hybrid motor starter

2909560

<https://www.phoenixcontact.com/us/products/2909560>



Hybrid motor starter as an alternative to a conventional reversing contactor. Reverses 3~ AC motors up to 9 A and offers motor protection. Possible supply and relay extension via DIN rail connector.

ELR H3-I-PT- 24DC/500AC-9-P - Hybrid motor starter

2909561

<https://www.phoenixcontact.com/us/products/2909561>



Hybrid motor starter as an alternative to a conventional contactor circuit. Starts 3~ AC motors up to 9 A and offers motor protection. Possible supply and relay extension via DIN rail connector.

EM-2RSC/21AU-R/L-P - Extension module

2908701

<https://www.phoenixcontact.com/us/products/2908701>



ELR H5-I-PT- 24DC/500AC-3-P - Hybrid motor starter

2909562

<https://www.phoenixcontact.com/us/products/2909562>



Hybrid motor starter as an alternative to a conventional reversing contactor. Reverses 3~ AC motors up to 3 A and offers motor protection. Possible supply and relay extension via DIN rail connector.

ELR H3-I-PT- 24DC/500AC-3-P - Hybrid motor starter

2909563

<https://www.phoenixcontact.com/us/products/2909563>



Hybrid motor starter as an alternative to a conventional contactor circuit. Starts 3~ AC motors up to 3 A and offers motor protection. Possible supply and relay extension via DIN rail connector.

EM-2RSC/21AU-R/L-P - Extension module

2908701

<https://www.phoenixcontact.com/us/products/2908701>

ELR H5-IS-PT- 24DC/500AC-9-P - Hybrid motor starter

2909567

<https://www.phoenixcontact.com/us/products/2909567>



Hybrid motor starter as an alternative to a conventional reversing contactor. Reverses 3~ AC motors up to 9 A, provides motor protection and emergency stop up to SIL 3/PL e. Group shut-down, supply, and relay extension possible via DIN rail connector.

ELR H3-IS-PT- 24DC/500AC-9-P - Hybrid motor starter

2909568

<https://www.phoenixcontact.com/us/products/2909568>



Hybrid motor starter as an alternative to a conventional protective circuit. Starts 3~ AC motors up to 9 A, provides motor protection and emergency stop up to SIL 3/PL e. Group shut-down, supply, and relay extension possible via DIN rail connector.

EM-2RSC/21AU-R/L-P - Extension module



2908701

<https://www.phoenixcontact.com/us/products/2908701>

ELR H5-IS-PT- 24DC/500AC-3-P - Hybrid motor starter

2909569

<https://www.phoenixcontact.com/us/products/2909569>



Hybrid motor starter as an alternative to a conventional reversing contactor. Reverses 3~ AC motors up to 3 A, provides motor protection and emergency stop up to SIL 3/PL e. Group shut-down, supply, and relay extension possible via DIN rail connector.

ELR H3-IS-PT- 24DC/500AC-3-P - Hybrid motor starter

2909570

<https://www.phoenixcontact.com/us/products/2909570>



Hybrid motor starter as an alternative to a conventional protective circuit. Starts 3~ AC motors up to 3 A, provides motor protection and emergency stop up to SIL 3/PL e. Group shut-down, supply, and relay extension possible via DIN rail connector.

Phoenix Contact 2023 © - all rights reserved
<https://www.phoenixcontact.com>

Phoenix Contact USA
586 Fulling Mill Road
Middletown, PA 17057, United States
(+717) 944-1300
info@phoenixcon.com